

AGENDA



- Committee - **POLICY DEVELOPMENT PANEL**
- Date & Time - Monday, 9 February 2026 at 6.00 pm
- Venue - Council Chamber, Council Offices, Priory Road, Spalding

Membership of the Policy Development Panel:

Councillors: D Ashby, P Barnes, A C Beal, L J Eldridge (Vice-Chairman), M Geaney, R A Gibson, M Hasan, J L Reynolds, M Le Sage, J Whitbourn and A R Woolf (Chairman)

Substitute members on the Policy Development Panel may be appointed only from members who are not on the Cabinet. Substitutions apply for individual meetings.

Quorum: 4

Persons attending the meeting are requested to turn mobile telephones to silent mode

Democratic Services
Council Offices, Priory Road
Spalding, Lincs PE11 2XE

Date: 30 January 2026

AGENDA

1. Apologies for absence.
2. Declaration of Interests. -
Where a Councillor has a Disclosable Pecuniary Interest the Councillor must declare the interest to the meeting and leave the room without participating in any discussion or making a statement on the item, except where a councillor is permitted to remain as a result of a grant of dispensation.
3. Waste Policies - (Pages 3 - 28)
To propose revised waste policies, including the Policy Development Panel's feedback (report of the Director of Communities enclosed).
4. Any other items which the Chairman decides are urgent. -

NOTE: No other business is permitted unless by reason of special circumstances, which shall be specified in the minutes, the Chairman is of the opinion that the item(s) should be considered as a matter of urgency.



Report To:	Policy Development Panel
Date:	9 February 2026
Subject:	Waste Policies
Purpose:	To propose revised waste policies, including the Policy Development Panel's feedback.
Key Decision:	Yes
Portfolio Holder:	Councillor Jim Astill – Portfolio Holder for Corporate and Environmental Services
Report Of:	Jason King, Director of Communities
Report Author:	Victoria Burgess, Assistant Director - Neighbourhoods
Ward(s) Affected:	All
Exempt Report:	No

Summary

Members of the Policy Development Panel reviewed and provided feedback on the waste policies presented to the Committee on 17 December. This report incorporates those comments and presents revised policies for Members' consideration ahead of Cabinet decision.

Recommendations

That the committee:

1. Notes the report.
2. Reviews the waste policy revisions suggested from the Policy Development Panel meeting of 17 December 2025 as set out in Appendix B.
3. Provides feedback on the revised waste policies and recommends them to Cabinet for adoption.

Reasons for Recommendations

To enable the Council to provide a clear set of policies for the new waste collection service delivery model to ensure legal compliance, to provide an efficient and effective service, and to provide clear information to residents.

Other Options Considered

Not applicable.

1. Background

- 1.1 At the Policy Development Panel (PDP) meeting on the 17 December, Members thoroughly reviewed each of the waste policies presented and provided feedback for further consideration. Members requested that the feedback of the Panel be noted, and that a revised Waste Policies report be reviewed by the PDP, prior to submission to Cabinet.

2. Report

- 2.1 This report presents the feedback of the PDP.
- 2.2 Appendix A presents the original policy document considered by PDP on the 17th December 2025.
- 2.3 Subsequent revisions of the waste policies following feedback from the meeting on the 17th December are attached at Appendix B in table format. This table presents the original policies included in the PDP report of the 17 December, PDP comments, and the proposed policy incorporating PDP feedback.

3. Conclusion

- 3.1. A new set of policies and procedures are required to enable the Council to implement the new waste collection model and help provide clear guidance to its residents ensuring, so far as possible, a smooth transition to the new service.

Implications

South and East Lincolnshire Councils Partnership

Introducing the new waste collection policies will enable the Council to change its waste service and align more closely with the partnership Councils and other authorities within the Lincolnshire Waste Partnership.

Corporate Priorities

Implement the Environment Act 2021 and Extended Producer Responsibility as they come forward.
A new wheeled bin service, controlling the amount of waste presented, improving the quality of recycling presented, and introducing a separate food waste collection, to ensure a more efficient and effective waste management service aligns with this priority.

Staffing

A dedicated engagement team will be in place to help residents understand changes to their current service. Current teams will undergo training on the new policies once approved.

Workforce Capacity Implications

None.

Constitutional and Legal Implications

The Council operates under a complex legislative framework for the management of waste services which includes the Environmental Protection Act 1990, the Waste (England and Wales) Regulations 2011, the Environment Act 2021, the Separation of Waste (England) Regulations 2024, and the Producer Responsibility Obligations (Packaging Waste) Regulations 2024:

Section 45 of the Environmental Protection Act 1990 provides a duty for the Council to make arrangements for the collection of household waste.

Section 34 of the Environmental Protection Act 1990 provides a duty for the Council to collect commercial waste from business premises, or to arrange for the collection of that waste.

The Waste (England and Wales) Regulations 2011, requires the Council to apply the Waste Hierarchy to waste management.

The Producer Responsibility Obligations (packaging waste) Regulations 2024 sets out the statutory requirements for the Council to be able to demonstrate an 'efficient and effective' waste service for the management of packaging wastes.

Under the Environment Act 2021 and exercised through the Separation of Waste (England) Regulations 2024, the default waste collection requirements for most households are separate containers for the collection of residual (non-recyclable) waste, food waste (to be collected weekly), paper and card, and other dry recyclable materials (plastic, metal, glass).

Data Protection

None.

Financial

Failure to provide an efficient and effective service negatively impacts on the Council's budget. A clear set of policies and procedures that are well communicated is necessary to support these services.

Risk Management

None.

Stakeholder / Consultation / Timescales

None.

Reputation

Failure to provide an efficient and effective service risks the Council's reputation, a clear set of policies and procedures that are communicated to all residents is necessary to support these services.

Contracts

n/a.

Crime and Disorder

Setting out clear responsibilities for businesses regarding their Duty of Care under the Environmental Protection Act 1990 reduces waste related crime.

Equality and Diversity / Human Rights / Safeguarding

Waste policies will be assessed to ensure that the needs of all members of the community are met. An Equality Impact Assessment will accompany the Cabinet report.

Health and Wellbeing

None.

Climate Change and Environmental Implications

None.

Appendices

Appendices are listed below and attached to the back of the report:

Appendix A - Waste and Recycling Collection Policies considered by PDP on 17 December 2025

Appendix B – Waste policy – PDP comments and proposals for further consideration.

Background Papers

Background papers used in the production of this report are listed below: -

Document title	Where the document can be viewed
Waste Services Delivery Model. Cabinet, 26 June 2025	Cabinet report - waste delivery model FINAL.pdf
Waste Policies. Policy Development Panel, 17 December 2025	Agenda for Policy Development Panel on Wednesday, 17th December, 2025, 6.00 pm - South Holland District Council

Chronological History of this Report

Name of Body	Date
Policy Development Panel	17 December 2025

Report Approval

Report author: Victoria Burgess – Assistant Director, Neighbourhoods
victoria.burgess@e-lindsey.gov.uk

Signed off by: Jason King - Director of Communities
jasonking@sholland.gov.uk

Approved for publication: Cllr Jim Astill, Portfolio Holder for Corporate, Governance, Communications & Environmental Services
jastill@sholland.gov.uk

This page is intentionally left blank



Waste and Recycling Collection Policies

Introduction

The Council operates under a complex legislative framework for the management of waste services which includes the Environmental Protection Act 1990, the Waste (England and Wales) Regulations 2011, the Environment Act 2021, the Separation of Waste (England) Regulations 2024, and the Producer Responsibility Obligations (Packaging Waste) Regulations 2024.

It is important that residents and businesses within South Holland are provided with a waste collection service that both fulfils the requirements of these legal instruments and enables them to participate in an effective waste collection service, supporting them to reduce their waste, manage it securely to prevent litter, and increase recycling.

The Council has already demonstrated its commitment to efficient, effective, and legally compliant waste services that support recycling, reduce emissions, and deliver the requirements of Extended Producer Responsibility (EPR) funding for packaging wastes. This document therefore sets out the policies required to enable the Council to meet its strategic commitments and statutory obligations for delivering a waste collection service.

This document also outlines the key elements that guide the delivery of waste collection services across the district to ensure the services are delivered equitably, legally and within the approved budget.

Contents

		Page
1	Strategic commitments	2
2	Statutory responsibilities	3
2.1	Legal responsibility to collect waste	3
2.2	Duty to collect commercial waste	3
2.3	Duty to apply the Waste Hierarchy	3
2.4	Requirement to establish an effective and efficient waste service	3
2.5	Simpler Recycling	4
3	Waste collection policies	4
3.1	Waste collection	4
3.2	Waste collection provision	4
3.3	Bank Holiday collections and collection days	4

3.4	Properties exempt from bin collections	4
3.5	Side waste	5
3.6	Charging for bins	5
3.7	Requirement to segregate waste	5
3.8	Approach to enforcement of regulations	5
3.9	Unadopted roads	6
3.10	Bin colours and waste types	6
3.11	Frequency of collection	6
3.12	Bin presentation	6
3.13	Missed collections	7
3.14	Assisted collections	7
3.15	Additional capacity needs	7
3.16	Charging for bins/services	7
3.17	Commercial waste	7
3.18	Collection of bulky waste	8
4	Governance	8

1. Strategic commitments

1.1 The South & East Lincolnshire Councils Partnership (SELCP) has established Environment as a priority in the Sub-Regional Strategy (2024/5 – 2028/9) and has made the following commitments as part of this strategy:

‘Working with partners to play our role in addressing climate change and environmental responsibilities, and also to encourage others to follow our example’.

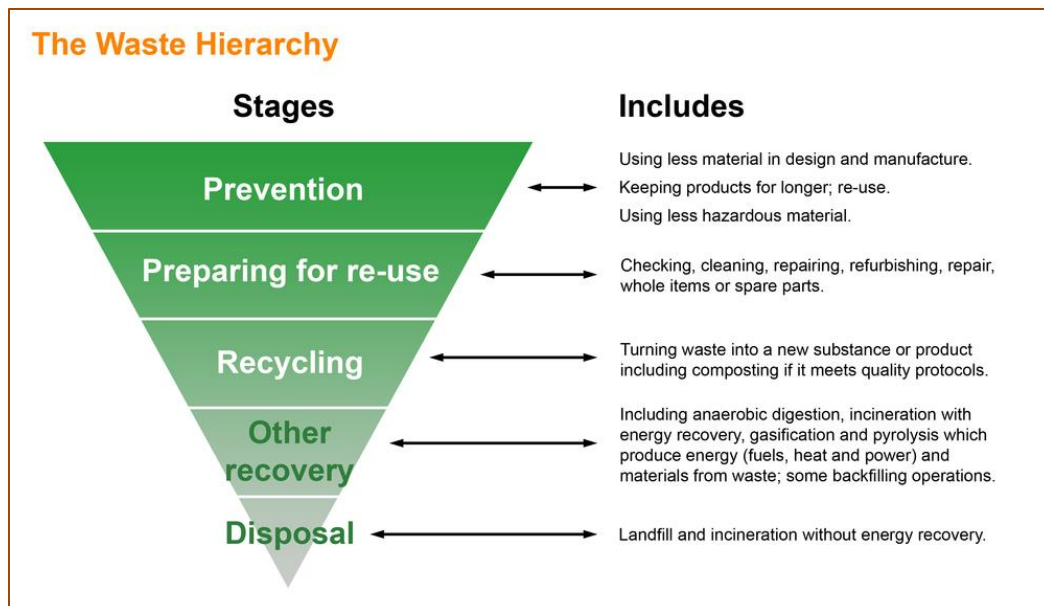
1.2 Strategic Actions supporting this priority are to:

- Work with the South and East Lincolnshire Climate Action Network (SELCAN) to deliver the Climate Change Strategy.
- Work with partners to increase biodiversity.
- Implement the Environment Act and Extended Producer Responsibility (EPR)
- Discourage fly tipping and environmental crime through deterrence, education and enforcement.
- Maintain and seek to improve street cleanliness
- Work with local communities to develop green spaces and play areas
- Protect and enhance built heritage and environment, with local businesses and through green homes grants, and create new developments.

2. Statutory responsibilities

- 2.1 **Legal responsibility to collect waste:** The Council has a duty under The Environmental Protection Act 1990, as a Waste Collection Authority, to arrange for the collection of household waste in its area, except waste which is situated at a place which in the opinion of the authority is so isolated that the cost of collecting it would be unreasonably high and to which the authority is satisfied that adequate arrangements for its disposal have been or can be reasonably expected to be made by a person who controls the waste.
- 2.2 **Duty to collect commercial waste:** the Council has a duty under The Environmental Protection Act 1990, as a Waste Collection Authority, if requested by the occupier of premises in its area, to collect commercial waste from the premises, or to arrange for the collection of the waste. However under the Controlled Waste Regulations 2012, the Council must make a charge for the collection and disposal of this waste. Businesses must ensure they have made separate arrangements for the collection and disposal of their commercial waste, including documented Waste Transfer arrangements.
- 2.3 **Duty to apply the Waste Hierarchy:** under Article 4 of the revised Waste Framework (Directive 2008/98/EC), as set out in the Waste (England and Wales) Regulations 2011, the Council must apply the Waste Hierarchy to waste management. The Waste Hierarchy shown in Figure 1 below, ranks waste management options according to what is best for the environment; Prevention, Preparing for re-use, Recycling, Other recovery, and then Disposal.

Figure 1 The Waste Hierarchy



- 2.4 **Requirement to provide an effective and efficient waste service:** the Producer Responsibility Obligations (packaging waste) Regulations 2024 sets out the statutory requirements for the Council to be able to demonstrate an 'efficient and effective' waste service to comply with Extended Producer Responsibility (EPR) funding.

- 2.5 **Simpler Recycling:** Under the Environment Act 2021 and exercised through the Separation of Waste (England) Regulations 2024, the default requirements for most households are separate containers for the collection of residual (non-recyclable) waste, food waste (to be collected weekly), paper and card, and other dry recyclable materials (plastic, metal, glass).

The aim of 'Simpler Recycling' is to make recycling easier, enabling members of the public and businesses to recycle the same materials across England whether at home, work or school.

3. Waste collection policies

- 3.1 **Waste collection:** the Council has specific duties under the Environmental Protection Act 1990 to collect waste from households. Section 46 of the Act requires the Council to arrange for the collection of waste from any premises, and by notice served, require the occupier to place the waste for collection in receptacles of a kind a number specified. The Council can specify the type of receptacle, the number, the type of waste presented in each receptacle, where to present waste for collection and the removal of receptacles to the property.
- 3.2 **Waste collection provision:** the default provision is for waste from all properties to be collected in 3 wheeled bins:
- 1 x 240L for residual waste,
 - 1 x 240L bin for mixed dry recycling
 - 1 x 240L for paper and card.
 - Residents will also receive a kitchen caddy and a kerbside caddy to support the food waste collection.
- 3.3 **Bank Holiday collections and collection days:** collections will be made on a Bank Holiday, although some changes over the Christmas period will be required. Changes to collection days may be made from time to time, e.g. due to housing growth, or business continuity needs.
- 3.4 **Properties exempt from bin collections:** If needed, a decision on whether a property can accommodate bins, will be made by an authorised officer of the Council. Where residents of properties have been assessed as unable to use the standard bin collection provision, they may be supplied with a communal bin, be placed on an authorised bag scheme, or have one or all bins replaced subject to the officer decision.

Exempt properties may include

- i) properties where presenting a wheeled bin at the curtilage requires the householder to take the bin through a room in their house;

- ii) where a property has insufficient space within its boundary to accommodate bins, such as a flat;
- iii) where bins would be required to be stored permanently on the highway.

Where bags are required, these will be supplied to the capacity equal to the bin provision and the collection frequency, e.g. 4 bags per 240l bin.

- 3.5 **Side waste:** any waste placed outside of a bin will not be collected. This policy is to ensure that the council supports the Waste Hierarchy, supporting residents to reduce the amount of waste being presented, ensuring recycling is kept clean and dry which is particularly important for paper and card, that collection rounds can be completed within the working day, and to reduce littering and fly tipping. Exempt properties will be provided with 104 residual bags and 48 recycling bags, delivered once per year. No more than 4 bags will be collected on each scheduled collection.
- 3.6 **Charging for bins:** charges will apply to the householder for any new builds and for replacement bins due to damage, loss, or theft. The Council will replace bins free of charge if they are damaged by the service.
- 3.7 **Requirement to segregate waste:** the Council's policy requires households to segregate their waste as outlined in the Simpler Recycling rules relating to residual (non-recyclable), food waste, paper and card, other dry recyclable materials (plastic, metal, glass).
- 3.8 **Approach to enforcement of regulations:** Education and engagement is the preferred approach to help residents understand how to manage their waste to meet the waste hierarchy – to reduce and reuse waste where possible, with a responsibility to improve recycling supported by the Council.

Residents will be informed on their collection day when wrong items are placed within a bin or bag through the use of tags placed on bin handles, and/or stickers. Contaminated recycling cannot be collected due to the potential impact on the entire vehicle load.

Bins must not be stored permanently on the highway and must be taken back into the property as soon as possible after collection. It is an offence under Section 137 of the Highways Act 1980 if a person without lawful authority, in any way willfully obstructs the free passage along a highway. Bins which are left on the highway, or considered permanently stored or where reports are made, will be removed without notice. A householder requesting return of the bin will be charged a delivery charge.

Any residents not complying with the Council's requirements shall be liable on summary conviction to a fine not exceeding level 3 on the standard scale, other proportionate legal action is available to the Council, or it may remove the waste collection service from the resident and require the resident to make alternative arrangements for the collection and disposal.

3.9 **Unadopted roads:** the Environmental Protection Act 1990 allows the Council to specify where receptacles should be placed for collection. This Council’s policy is that wheeled bins/ bags will not be collected from unadopted roads (unadopted roads are those roads not maintained by a highway authority as defined by Highways Act 1980). In such cases, bins/bags should be presented at the curtilage for collection, which is the point closest to their property on the nearest adopted road.

This policy also applies to long and/or private drives, where bins/bags should be presented at the curtilage of an adopted road. Exceptions may be made to new housing developments, in some situations, by agreement of a legal indemnity between the Council and the land owner.

3.10 **Bin colours and waste types** are as follows:

- Black-lidded bin: General non-recyclable household waste.
- Blue-lidded bin: Mixed dry recycling (e.g. plastics, cans, glass).
- Purple-lidded bin: Paper and card.
- Brown-lidded bin: Garden waste (optional paid service).
- Orange lidded caddy: Food waste

3.11 **Frequency of collection** is as follows:

	Week 1	Week 2	Week 3	Week 4
Black-lidded bin (general waste)	✓		✓	
Blue-lidded bin* (mixed dry recycling)		✓		
Purple-lidded bin* (paper and card)				✓
Orange-lidded caddy (food waste)	✓	✓	✓	✓

*where a property has been assessed as suitable for a bag collection, paper and card will be collected with the mixed dry recycling only due to the need for further segregation of the recycling.

3.12 **Bin presentation**

- Bins may be presented after 6:30pm the night before the collection day and must be ready for collection at the agreed location by 5:30am on collection day.
- The Council will not return to collect any bins missed due to not being presented in time for the collection.
- Bins should be presented at the curtilage of each property to the nearest adopted highway

- Presentation points will be used as agreed with officers where bins cannot be stored at the curtilage.

3.13 Missed collections

- If a householder has not had their bin collected but adjacent neighbours have, and no tag has been added to the bin to inform them that the bin was contaminated, then they should report the missed bin after 2 pm on the day of collection and within 24 hours following the day of collection, as crews will be operating within the area and will be able to return for collection.
- Where authorised, re-collection will be attempted within 5 working days.

3.14 Assisted collections

Assisted collections will be available to residents unable to present their waste due to ill health, disability, or infirmity and who do not have assistance from household members. Applications for an assisted collection will be assessed by an authorised officer and will be subject to periodic review. Waste and recycling will be collected from and returned to an agreed location.

3.15 Additional capacity needs

Households may request additional capacity if:

- There are 6 or more residents.
- There are 3+ children in nappies.
- There is a need to dispose of additional waste due to health needs.
- A waste audit will be conducted before approval.
- Any additional bins will be reviewed periodically.

3.16 Charging for bins/services will be levied as follows:

Ref	Chargeable Item / service	Charging
a	Replacement Bins (Black, Blue, Purple, Orange, Brown)	Charges applied where bin has been damaged, lost or stolen – unless damage / loss caused by council crews
b	Additional Bin (where authorised)	Charges applied for bin delivery
c	Garden waste (Brown bin)	Charges applied for garden waste service, the (brown) bin and bin delivery
d	Supply of bins to new homes	Occupiers of new homes will be charged for initial bin provision and delivery
e	Bins at Places of worship, village halls & community centres	Authorised locations will be provided with one set of bins, additional waste charged at a commercial rate.
f	Removal of Bulky Waste	A bulky waste collection service will be provided. This service is chargeable

3.17 Commercial waste

The Controlled Waste (England and Wales) Regulations 2012 require a charge to be levied on the producer of the commercial waste for both collection and disposal of the waste.

Where residential properties are used for business purposes, businesses need to ensure they follow their duty of care and obtain appropriate waste documentation from a waste carrier.

3.18 Collection of bulky waste

A service to collect Bulky Waste from households will be provided. Bulky wastes are items over 25kgs, such as furniture, washing machines and fridges. A full list of bulky waste items is set out on the list supplied by SHDC Waste services, at [Request a bulky/electrical waste collection - South Holland District Council](#). Bulky waste not collected includes any building materials, oil, car parts, asbestos, batteries, fixtures and fittings etc. Full details will be published on the Council's website.

The Controlled Waste (England and Wales) Regulations 2012 require a charge to be levied for this service.

4 Governance

Version Control			
Issue No	Author	Issue date	Reason For Issue
1.0	Group Manager – Waste and Fleet	8 December 2025	New waste collection model requires clear policies. Version provided for consideration and comment by the Council's Performance Development Panel

Waste Policy: PDP proposals and comparisons

Initial policy	PDP comment	Proposed policy	Additional notes
3.1 Waste collection			
Description of statutory duties for waste collection under S46 Environmental Protection Act 1990	No change	No change	
3.2 Waste collection policies			
<p>The default provision is for waste from all properties to be collected in 3 wheeled bins:</p> <ul style="list-style-type: none"> • 1 x 240L for residual waste, • 1 x 240L bin for mixed dry recycling • 1 x 240L for paper and card. • Residents will also receive a kitchen caddy and a kerbside caddy to support the food waste collection. 	<p>The default provision is for waste from all properties to be collected in 3 wheeled bins:</p> <ul style="list-style-type: none"> • 1 x 240L bin for residual waste, • 1 x 240L bin for mixed dry recycling • 1 x 240L bin for paper and card. <p>Residents will also receive a kitchen caddy and a kerbside caddy to support the food waste collection. Households will be provided with 52 kitchen caddy liners per year.</p>	<p>The default provision is for waste from all properties to be collected in 3 wheeled bins:</p> <ul style="list-style-type: none"> • 1 x 240L bin for residual waste, • 1 x 240L bin for mixed dry recycling • 1 x 240L bin for paper and card. <p>Residents will also receive a kitchen caddy and a kerbside caddy to support the food waste collection. Households will be provided with 52 kitchen caddy liners per year.</p>	<p>This is the default provision.</p> <p>PDP supportive of an option for a 180l bin for smaller households.</p> <p>Policy should be to supply liners</p> <p>Note that ongoing liner provision is £8k pa.</p>
3.3 Bank Holiday collections and collection days			
<p>Collections will be made on a Bank Holiday, although some changes over the Christmas period will be required. Changes to collection days may be made from time to time, e.g. due to housing growth, or business continuity needs.</p>	<p>Collections will be made on a Bank Holiday, except for Christmas Day, Boxing Day and New Years Day. Changes to collection days may be made from time to time, e.g. due to housing growth, or business continuity needs.</p> <p>PDP noted that clear communication would be required to residents</p>	<p>Collections will be made on a Bank Holiday, except for Christmas Day, Boxing Day and New Years Day. Changes to collection days may be made from time to time, e.g. due to housing growth, or business continuity needs.</p> <p>Residents will be provided with a collection calendar outlining these changes.</p>	

<p>3.4 Properties exempt from bin collections</p>			
<p>If needed, a decision on whether a property can accommodate bins, will be made by an authorised officer of the Council. Where residents of properties have been assessed as unable to use the standard bin collection provision, they may be supplied with a communal bin, be placed on an authorised bag scheme, or have one or all bins replaced subject to the officer decision.</p> <p>Exempt properties may include:</p> <p>i) properties where presenting a wheeled bin at the curtilage requires the householder to take the bin through a room in their house;</p> <p>ii) where a property has insufficient space within its boundary to accommodate bins, such as a flat;</p> <p>iii) where bins would be required to be stored permanently on the highway.</p> <p>Where bags are required, these will be supplied to the capacity equal to the bin provision and the collection frequency, e.g. 4 bags per 240l bin.</p>	<p>Concerns were expressed about the potential subjectivity of decisions on exemptions. Members requested a clear decision-making matrix to ensure consistency and fairness, and asked whether residents would have a right of appeal</p>	<p>Policy wording to remain as is. However:</p> <ul style="list-style-type: none"> Principles for assessing those properties exempt from some or all bin collections will be shared with Cllrs. Portfolio Holder as lead has awareness of operational procedures which will contain more detailed information regarding assessments. Establish a ‘request to review decision’ process available via the website and customer contact to provide residents with a clear communications channel to understand the reason for the decision made and enable a review. 	
<p>3.5 Side waste</p>			
<p>Any waste placed outside of a bin will not be collected. This policy is to ensure that the council supports the Waste Hierarchy, supporting residents to reduce the amount of waste being</p>	<p>Any waste placed outside of a bin will not be collected. This policy is to ensure that the council supports the Waste Hierarchy, supporting residents to reduce the amount of waste being</p>	<p>Any waste placed outside of a bin will not be collected. Exempt properties will be provided with 104 residual bags and 104 recycling bags, delivered once per year. No more than 4 residual bags, and</p>	

<p>presented, ensuring recycling is kept clean and dry which is particularly important for paper and card, that collection rounds can be completed within the working day, and to reduce littering and fly tipping. Exempt properties will be provided with 104 residual bags and 48 recycling bags, delivered once per year. No more than 4 bags will be collected on each scheduled collection.</p>	<p>presented, ensuring recycling is kept clean and dry which is particularly important for paper and card, that collection rounds can be completed within the working day, and to reduce littering and fly tipping – REMOVE SENTENCE. Exempt properties will be provided with 104 residual bags and 104 recycling bags, delivered once per year. No more than 4 residual bags, and 8 recycling bags will be collected on each scheduled collection.</p> <p>Request to allow additional bin accepting this may be at cost.</p>	<p>8 recycling bags will be collected on each scheduled collection.</p> <p>An additional bin may be provided at a cost.</p>	
<p>3.6 Charging for bins</p>			
<p>Charges will apply to the householder for any new builds and for replacement bins due to damage, loss, or theft. The Council will replace bins free of charge if they are damaged by the service.</p>	<p>Remove paragraph as repeated later, and consolidate within policy 3.16</p>	<p>Removed and reflected in 3.16</p>	
<p>3.7 Requirement to segregate waste</p>			
<p>The Council's policy requires households to segregate their waste as outlined in the Simpler Recycling rules relating to residual (non-recyclable), food waste, paper and card, other dry recyclable materials (plastic, metal, glass).</p>	<p>Members emphasized the importance of education regarding segregation of waste responsibilities and asked that all households receive the "Right Thing, Right Bin" guide and clear pictorial information at roll-out.</p>	<p>The Council's policy requires households to segregate their waste as outlined in the Simpler Recycling rules relating to residual (non-recyclable), food waste, paper and card, other dry recyclable materials (plastic, metal, glass). A comprehensive pictorial guide to which materials can be presented in each bin will be provided to residents.</p>	<p>Website also will be updated from existing link What goes in your waste bags - South Holland District Council to provide clarity with the new service</p>

3.8 Approach to enforcement of regulations			
<p>Paragraph 1: Education and engagement is the preferred approach to help residents understand how to manage their waste to meet the waste hierarchy – to reduce and reuse waste where possible, with a responsibility to improve recycling supported by the Council.</p> <p>Paragraph 2: Residents will be informed on their collection day when wrong items are placed within a bin or bag through the use of tags placed on bin handles, and/or stickers. Contaminated recycling cannot be collected due to the potential impact on the entire vehicle load.</p>	<p>Paragraph 1: Members supported education and engagement led approach.</p> <p>Paragraph 2: Members strongly disagreed with policy that contaminated recycling would not be collected. Request that crews remove visible contamination where practicable and empty the bin.</p>	<p>Paragraph 1: No change</p> <p>Paragraph 2: Residents will be informed on their collection day when wrong items are placed within a bin or bag through the use of tags placed on bin handles, and/or stickers. Contaminated recycling cannot be collected due to the potential impact on the entire vehicle load. Every effort will be made to remove contamination.</p> <p>Operational procedures will include expectation for crews to remove visible contamination where practicable, return the contamination to the bin and tag the bin to inform the resident. Tags will include common contamination types, allow crews to write additional details, and include council contact details. The Portfolio Holder will have oversight of these operational procedures.</p>	<p>The extent of change and need for support is recognised by PDP. Team will be supplemented by and engagement team to work with our residents.</p> <p>Noted that these policies are what we are working towards. That during implementation, safeguards will be in place to support residents with the change, particularly with recycling.</p> <p>Clear communication channels will be available and widely publicised.</p>

<p>Paragraph 3: Bins must not be stored permanently on the highway and must be taken back into the property as soon as possible after collection. It is an offence under Section 137 of the Highways Act 1980 if a person without lawful authority, in any way wilfully obstructs the free passage along a highway. Bins which are left on the highway, or considered permanently stored or where reports are made, will be removed without notice. A householder requesting return of the bin will be charged a delivery charge.</p> <p>Paragraph 4: Any residents not complying with the Council's requirements shall be liable on summary conviction to a fine not exceeding level 3 on the standard scale, other proportionate legal action is available to the Council, or it may remove the waste collection service from the resident and require the resident to make alternative arrangements for the collection and disposal</p>	<p>Paragraph 3: Bins must not be stored permanently on the highway and must be taken back into the property as soon as possible after collection. It is an offence under Section 137 of the Highways Act 1980 if a person without lawful authority, in any way wilfully obstructs the free passage along a highway, including the footpath. Bins which are left on the highway, or the footpath, or considered permanently stored, will be removed without notice. A householder requesting return of the bin will be charged a delivery charge</p> <p>Paragraph 4: No change</p>	<p>Paragraph 3: Bins must not be stored permanently on the highway and must be taken back into the property as soon as possible after collection. It is an offence under Section 137 of the Highways Act 1980 if a person without lawful authority, in any way wilfully obstructs the free passage along a highway, including the footpath. Bins which are left on the highway, or the footpath, or considered permanently stored, will be removed without notice. A householder requesting return of the bin will be charged a delivery charge</p> <p>Paragraph 4: No change</p>	
<p>3.9 Unadopted roads</p>			
<p>The Environmental Protection Act 1990 allows the Council to specify where receptacles should be placed for collection. This Council's policy is that wheeled bins/ bags will not be collected</p>	<p>Concern expressed regarding current arrangements in specific areas already agreed with the service.</p>	<p>The Environmental Protection Act 1990 allows the Council to specify where receptacles should be placed for collection. This Council's policy is that wheeled bins/ bags will generally not be</p>	

<p>from unadopted roads (unadopted roads are those roads not maintained by a highway authority as defined by Highways Act 1980). In such cases, bins/bags should be presented at the curtilage for collection, which is the point closest to their property on the nearest adopted road.</p> <p>This policy also applies to long and/or private drives, where bins/bags should be presented at the curtilage of an adopted road. Exceptions may be made to new housing developments, in some situations, by agreement of a legal indemnity between the Council and the landowner.</p>		<p>collected from unadopted roads (unadopted roads are those roads not maintained by a highway authority as defined by Highways Act 1980). In such cases, bins/bags should be presented at the curtilage for collection, which is the point closest to their property on the nearest adopted road.</p> <p>This policy also applies to long and/or private drives, where bins/bags should be presented at the curtilage of an adopted road. Exceptions may be made to new housing developments, in some situations, by agreement of a legal indemnity between the Council and the landowner, and through the existing private drives policy.</p>	
<p>3.10 Bin colours and waste types</p>			
<ul style="list-style-type: none"> • Black-lidded bin: General non-recyclable household waste. • Blue-lidded bin: Mixed dry recycling (e.g. plastics, cans, glass). • Purple-lidded bin: Paper and card. • Brown-lidded bin: Garden waste (optional paid service). • Orange lidded caddy: Food waste 	<p>Members requested that the body/base bin colour of ‘anthracite grey’ be included within the policy narrative.</p>	<p>All bins have a body of anthracite grey with different coloured lids as follows:</p> <ul style="list-style-type: none"> • Black-lidded bin: General non-recyclable household waste. • Blue-lidded bin: Mixed dry recycling (e.g. plastics, cans, glass). • Purple-lidded bin: Paper and card. • Orange lidded caddy: Food waste 	<p>A small silver caddy will also be provided for residents to keep inside their property to support the separate collection of food waste.</p>

		<ul style="list-style-type: none"> A brown bin is provided for Garden waste (optional subscription service). 	
3.11 Frequency of collection			
Table showing bin rotation across 4 weeks, for each commodity, including food waste.	<p>Noted where property has been assessed as suitable for a bag for all collections, paper and card will be collected with the mixed dry recycling only due to the need for further segregation of the recycling.</p> <p>Members requested a similar additional table to be included within the policy showing frequencies of collections for fully exempt/bag collections.</p>	Additional table to be included. Specific messaging to be provided to those residents with alternative arrangements.	
3.12 Bin presentation			
<ul style="list-style-type: none"> Bins may be presented after 6:30pm the night before the collection day and must be ready for collection at the agreed location by 5:30am on collection day. The Council will not return to collect any bins missed due to not being presented in time for the collection. Bins should be presented at the curtilage of each property Presentation points will be used as agreed with council officers where 	<ul style="list-style-type: none"> Bins may be presented after 6:30pm the night before the collection day and must be ready for collection at the agreed location by 5:30am on collection day. The Council will not return to collect any bins missed due to not being presented in time for the collection. Bins should be presented at the curtilage of each property to the nearest adopted highway REMOVE Presentation points will be used as agreed with council officers where 	<ul style="list-style-type: none"> Bins may be presented after 6:30pm the night before the collection day and must be ready for collection at the agreed location by 5:30am on collection day. The Council will not return to collect any bins missed due to not being presented in time for the collection. Bins should be presented at the curtilage of each property Presentation points will be used as agreed with council officers where 	

bins cannot be stored at the curtilage.	bins cannot be stored at the curtilage.	bins cannot be stored at the curtilage.	
3.13 Missed collections			
<ul style="list-style-type: none"> If a householder has not had their bin collected but adjacent neighbours have, and no tag has been added to the bin to inform them that the bin was contaminated, then they should report the missed bin after 2 pm on the day of collection and within 24 hours following the day of collection, as crews will be operating within the area and will be able to return for collection. Where authorised, re-collection will be attempted within 5 working days. 	<p>Members requested a clear commitment and attempted should be removed.</p> <ul style="list-style-type: none"> Where authorised, re-collection will be attempted within 5 working days. REMOVE ATTEMPTED 	<ul style="list-style-type: none"> If a householder has not had their bin collected but adjacent neighbours have, and no tag has been added to the bin to inform them that the bin was contaminated, then they should report the missed bin after 2 pm on the day of collection and within 24 hours following the day of collection, as crews will be operating within the area and will be able to return for collection. Where authorised, re-collection will be within 5 working days. 	
3.14 Assisted collections			
<p>Assisted collections will be available to residents unable to present their waste due to ill health, disability, or infirmity and who do not have assistance from household members.</p> <p>Applications for an assisted collection will be assessed by an authorised officer and will be subject to periodic review. Waste and recycling will be collected from and returned to an agreed location.</p>	<p>Assisted collections will be available to residents unable to present their waste due to ill health, disability, or infirmity and who do not have assistance from household members. This could be a temporary or permanent arrangement.</p> <p>Applications for an assisted collection will be assessed by an authorised officer and will be subject to periodic review. Waste and recycling will be collected from and returned to an agreed location.</p>	<p>Assisted collections will be available to residents unable to present their waste due to ill health, disability, or infirmity and who do not have assistance from household members. This could be a temporary or permanent arrangement.</p> <p>Applications for an assisted collection will be assessed by an authorised officer and will be subject to periodic review. Waste and recycling will be collected from and returned to an agreed location.</p>	

3.15 Additional capacity needs			
<p>Households may request additional capacity if:</p> <ul style="list-style-type: none"> • There are 6 or more residents. • There are 3 or more children in nappies. • There is a need to dispose of additional waste due to health needs. <p>A waste audit will be conducted before approval. Any additional bins provided will be reviewed periodically.</p>	No change	No change	
3.16 Charging for bins/services			
See separate tables below	See separate tables below, with PDP comments included.		Controlled Waste Regulations 2012 determine which services the Council should charge for
3.17 Commercial waste			
The Controlled Waste (England and Wales) Regulations 2012 require a charge to be levied on the producer of	No change	No change	

<p>the commercial waste for both collection and disposal of the waste.</p> <p>Where residential properties are used for business purposes, businesses need to ensure they follow their duty of care and obtain appropriate waste documentation from a waste carrier.</p>			
<p>3.18 Collection of bulky waste</p>			
<p>A service to collect Bulky Waste from households will be provided. Bulky wastes are items over 25kgs, such as furniture, washing machines and fridges. A full list of bulky waste items is set out on the list supplied by SHDC Waste services, at Request a bulky/electrical waste collection- South Holland District Council. Bulky waste not collected includes any building materials, oil, car parts, asbestos, batteries, fixtures and fittings etc. Full details will be published on the Council’s website.</p> <p>The Controlled Waste (England and Wales) Regulations 2012 require a charge to be levied for this service</p>	<p>No change</p>	<p>No change</p>	

3.16 Original policy:

Ref	Chargeable Item / service	Charging	PDP Notes
a	Replacement Bins (Black, Blue, Purple, Orange, Brown)	Charges applied where bin has been damaged, lost or stolen – unless damage / loss caused by council crews	Charging for replacement bins only where damage is proven, and bin not defective.
b	Additional Bin (where authorised)	Charges applied for bin delivery	Charging for providing and emptying additional bin capacity to be offered.
c	Garden waste (Brown bin)	Charges applied for garden waste service, the (brown) bin and bin delivery	
d	Supply of bins to new homes	Occupiers of new homes will be charged for initial bin provision and delivery	Charging occupiers of new homes for initial bin provision to be removed. Note that removal of charges for new homes will give a pressure of circa £70,000pa
e	Bins at Places of worship, village halls & community centres	Authorised locations will be provided with one set of bins, additional waste charged at a commercial rate.	Charging a commercial rate for collections from village halls and community centres should be considered due to the commercial use.
f	Removal of Bulky Waste	A bulky waste collection service will be provided. This service is chargeable	

3.16 Proposed policy:

Ref	Chargeable Item / service	Charging	PDP Notes
a	Replacement Bins (Black, Blue, Purple, Orange, Brown)	Charges applied where bin has been proven to be damaged, lost or stolen – unless damage / loss caused by council crews or bin is defective	
b	Additional Bin (where authorised)	Charges applied for bin delivery	
b2	Additional Bin (where authorised re policy 3.5)	Charges applied for bin hire and collection	Example being BBC Bin Hire initiative

c	Garden waste (Brown bin)	Charges applied for garden waste service, the (brown) bin and bin delivery	
e	Bins at Places of worship, village halls & community centres	Authorised locations will be provided with one set of bins, additional waste REMOVE and charged at a commercial rate.	Including a charge for commercial use of village halls and community centres would provide an income of £26,000 pa
f	Removal of Bulky Waste	A bulky waste collection service will be provided. This service is chargeable	